



Castles

ASKING PRICE

£172,000

Larmans Road

Enfield, EN3 6QX

PROPERTY SUMMARY

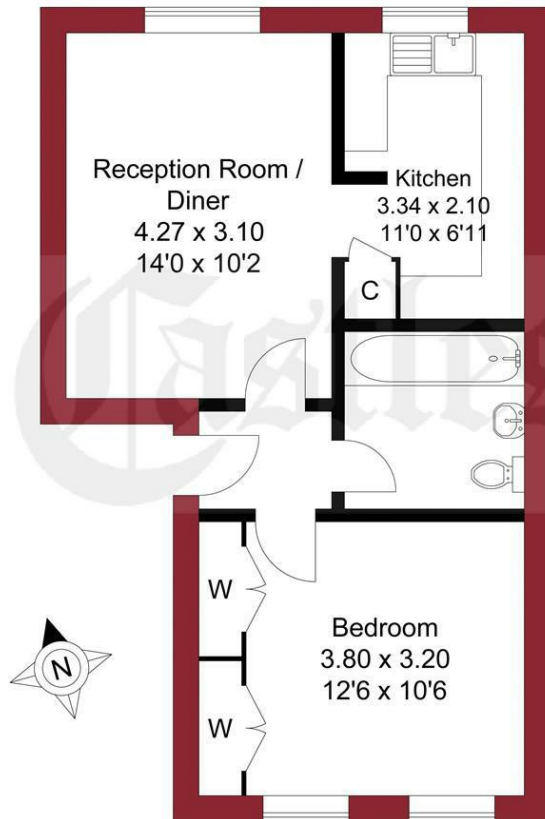
A 1st floor modern purpose built 1 bedroom flat located close to Turkey Street Train Station and close to local amenities. The property is being sold with 63 years lease term remaining and would suit a buy to let investment buyer. Viewing is recommended. Features include:- communal parking, security entryphone, 1st floor, 1 bedroom, gas central heating, close to local amenities, viewing recommended.

Agents Note:- We are advised by the seller, the gas central heating system is not working currently.



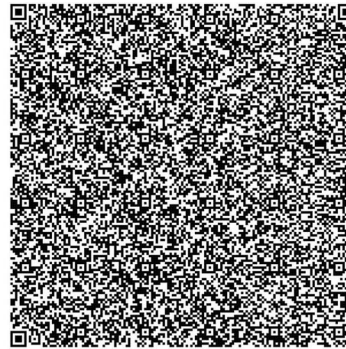


APPROXIMATE GROSS INTERNAL AREA
40.48 sqm / 435.72 sqft



THIS PLAN IS FOR ILLUSTRATION ONLY AND MAY NOT BE
REPRESENTATIVE OF THE PROPERTY

For a guide to the area
please scan this code for
more information



SCAN ME



Flat - First Floor

Leasehold

Council:

Council Tax Band: B

Lease Remaining: 63 Years

Service Charge: £1,340.04

Ground Rent: £160.00

Agents Note: Whilst every care has been taken to prepare these particulars, they are for guidance purposes only. All measurements are approximate and are for general guidance purposes only and whilst every care has been taken to ensure their accuracy, they should not be relied upon and potential buyers/tenants are advised to recheck the measurements



OFFICE ADDRESS

243 - 245 Hertford Road
Enfield
London
EN3 5JJ

OFFICE DETAILS

0208 804 8000
enfield@castles.london
<https://www.castles.london>

